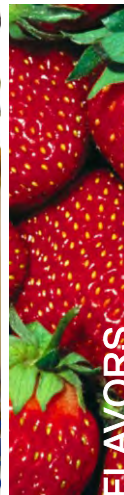




# ENCAPSULATION

**Personal Care & Home Care Division (2016 - 2017)**

## ENCAPSULATION OF...



## ENCAPSULATION METHODS



## INDEX

4	Sprayspheres®- SM
5	Sprayspheres®- SC
6	Sprayspheres®- SH
7	Surprise Spheres - SS (Color Changing Beads)
8	Twinkle Sparkle™- EG
9	Natural Exfoliato™ Sprayspheres®- SE
10	Soft Spheres - SA
11	Oil Spheres - SO
12	Actishapes™- AS
13	Actifilms™- AF
14	Lustre Dust - LD
15	Lustre Dust - LD



## PARTICLE SIZES

XS = Extra Small = $< 0.2$ mm
VVS = Very Very Small = $0.2 - 0.3$ mm
VS = Very Small = $0.3 - 0.6$ mm
S = Small = $0.6 - 0.8$ mm
M = Medium = $0.8 - 1.4$ mm
L = Large = $1.4 - 2.0$ mm
XL = Extra Large = $2 - 5$ mm

## APPLICATIONS

ORAL CARE
HAND SANITIZERS
SHAMPOOS
CREAMS
LOTIONS
SOAPS
DETERGENTS
GELS
HAIR CONDITIONERS
NAILS
TALCUM POWDER
COLOR COSMETICS



# SPRAYSPHERES® - SM

**INGREDIENTS: Mannitol, Cellulose, HPMC, Color (1-5%)**

- ❖ An alternative to lactose based formulations.
- ❖ Visual carrier systems for home and personal care water-based formulas.
- ❖ Based on a unique manufacturing process that creates spherical beads.
- ❖ Creates visual effects in your soaps, emulsions, gels, lotions and creams.
- ❖ Partially soluble in water, insoluble in oils.
- ❖ Beads are hard when dry but soften in contact with at least 20% water.
- ❖ Disappear on gentle rubbing without leaving any shell residue on skin or hair upon application.
- ❖ Have a long shelf life without any added preservatives.

As an innovative leader in high quality beads, we offer an impressive range of customization possibilities such as: loading pigments and enclosing our carriers with hydrophobic functional ingredients. This includes actives, fragrances, vitamins, oils etc. We can also modify the size and color shade as per your requirements.

**SM-YE-1306-M**

*\*Actual samples may vary slightly in color to that shown in the images above.*

**SM-OR-4084-S**

**SM-BR-WL-4011-VVS**

**SM-BL-4023-S**

**SM-YE-4184-M-REV**

**SM-P-PI-3061-M**

**SM-RE-4042-VS**

**SM-PU-4181-M**

**SM-SI-4321-VS**

# SPRAYSPHERES® - SC

**INGREDIENTS:** Lactose, Cellulose, HPMC, Color (1-3%)

- ❖ Visual carrier systems for home and personal care water-based formulas.
- ❖ Based on a unique manufacturing process that creates spherical beads.
- ❖ Creates visual effects in your soaps, emulsions, gels, lotions and creams.
- ❖ Partially soluble in water insoluble in oils.
- ❖ Beads are hard when dry but soften in contact with at least 20% water.
- ❖ Disappear on gentle rubbing without leaving any shell residue on skin or hair upon application.
- ❖ Have a long shelf life without any added preservative.

As an innovative leader in high quality beads, we offer an impressive range of customization possibilities such as: loading pigments and enclosing our carriers with hydrophobic functional ingredients. This includes actives, fragrances, vitamins, oils etc. We can also modify the size and color shade as per your requirements.

**SC-GR-1409-M**

\*Actual samples may vary slightly in color to that shown in the images above.

**SC-BK-1752-S**

**SC-G-YE-1168-L**

**SC-RE-1585-VS**

**SC-BL-VE-1104-VVS**

**SC-BR-VE-1701-S**

**SC-YE-MIO-1305-S-SAK**

**SC-P-GR-3024-M**

**SC-WH-1003-VS**



# SPRAYSPHERES® - SH

**INGREDIENTS:** Lactose, Cellulose, HPMC, Color (10-50%)

- ❖ Visual carrier systems for home and personal care water-based formulas.
- ❖ Based on a unique manufacturing process that creates spherical beads.
- ❖ Creates visually distinct effects with high color loading in your soaps, emulsions, gels, lotions and creams.
- ❖ Partially soluble in water, insoluble in oils.
- ❖ Beads are hard when dry but soften in contact with at least 20% water.
- ❖ Disappear on gentle rubbing without leaving any shell residue on skin or hair upon application.
- ❖ Have a long shelf life without any added preservatives.

As an innovative leader in high quality beads, we offer an impressive range of customization possibilities such as: loading pigments and enclosing our carriers with hydrophobic functional ingredients. This includes actives, fragrances, vitamins, oils etc. We can also modify the size and color shades as per your requirements.

**SH-BL-1114-S**

\*Actual samples may vary slightly in color to that shown in the images above.

**SH-P-YE-3071-M**

**SH-YE-1306-M**

**SH-GR-1412-S**

**SH-OR-1504-VS**

**SH-P-BL-3001-L**

**SH-P-SI-3121-S**

**SH-P-RE-1285-S**

**SH-PI-VE-1605-VS**

# SURPRISE SPHERES - SS

## (COLOR CHANGING BEADS)

**INGREDIENTS:** Lactose, Cellulose, HPMC, PVA, Color (10-50%)

- ❖ Visual carrier systems for home and personal care water-based formulas.
- ❖ Based on a unique manufacturing process that creates spherical beads with a different color on the outside.
- ❖ Creates visual effects with high color loading in your soaps, emulsions, gels, lotions and creams.
- ❖ Partially soluble in water insoluble in oils.
- ❖ Beads are hard when dry but soften in contact with at least 20% water.
- ❖ Change color and disappear on gentle rubbing without leaving any shell residue on skin or hair upon application.
- ❖ Have a long shelf life without any added preservatives.

As an innovative leader in high quality beads, we offer an impressive range of customization possibilities such as: loading pigments and enclosing our carriers with hydrophobic functional ingredients. This includes actives, fragrances, vitamins, oils etc. We can also modify the size as per your requirements.

**SS-BZ(RE)-3506-VVS**

\*Actual samples may vary slightly in color to that shown in the images above.

**SS-GR(BL)-3561-S**

**SS-WH(RE)-3501-M**

**SS-RE(GR)-3581-M**

**SS-SI(BL)-3541-S**

**SS-GO(GR)-3521-M**

**SS-PI(BZ)-3506-VVS**

**SS-OR(YE)-3512-VS**

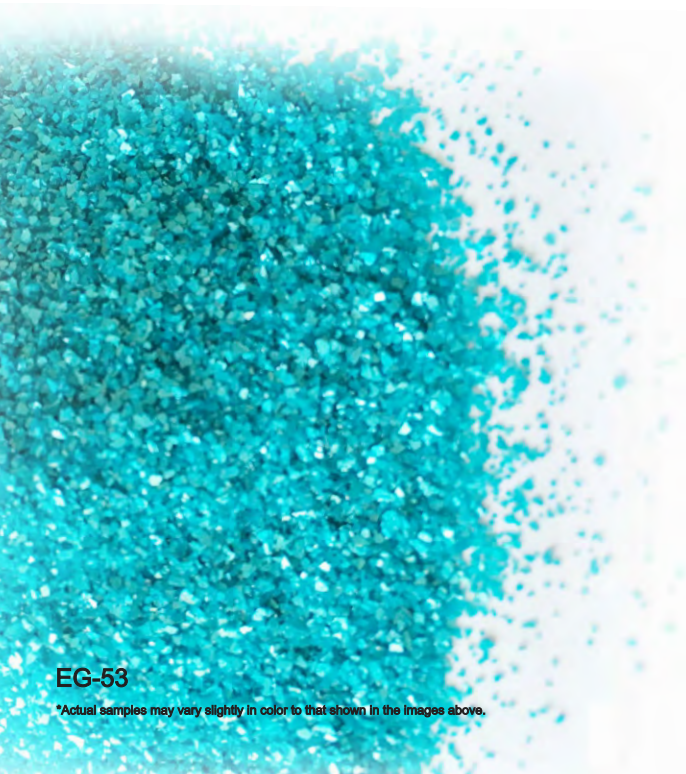
**SS-WH(PI)-3414-VS**

# TWINKLE SPARKLE™ - EG

**INGREDIENTS:** Acacia Gum, Color

- ❖ Visual carrier systems for home and personal care formulations with a powder and oil base formulation.
- ❖ Technology is based on a unique manufacturing process that forms dust in various colors.
- ❖ Creates visual effects in your nail enamels, foundation, sunscreens, emulsions, soaps and bath bombs.
- ❖ Insoluble in oils.
- ❖ Larger particle size compared to Lustre Dust.
- ❖ Remains intact in added formulation.
- ❖ Have a long shelf life without any added preservatives.

As an innovative leader in high quality visual carriers, we offer an impressive range of possibilities for ultimate customer experience. More colors and customization of actives are possible on customers request.



**EG-53**

*\*Actual samples may vary slightly in color to that shown in the images above.*



**EG-10**



**EG-20**



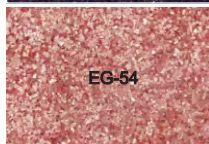
**EG-01**



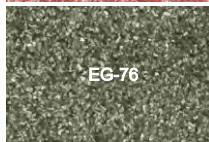
**EG-15**



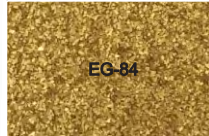
**EG-71**



**EG-54**



**EG-76**



**EG-84**



# NATURAL EXFOLIATO™

## (SPRAYSPHERES® - SE)

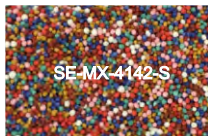
### INGREDIENTS: Cellulose, Color

- ❖ Visual carrier systems with exfoliating properties for home and personal care water-based formulas.
- ❖ Based on a unique manufacturing process that creates spherical beads.
- ❖ Can be used in your soaps, emulsions, gels, lotions and creams.
- ❖ Insoluble in water and oils.
- ❖ Beads are hard when dry and do not disintegrate on rubbing when in contact with water-based formulations.
- ❖ Used for scrub applications and skin treatments.
- ❖ Have a long shelf life without any added preservatives.
- ❖ Completely biodegradable being from a natural source.

As an innovative leader in high quality beads, we offer an impressive range of customization possibilities of size and color shade as per your requirements.

SE-RE-4042-VS

\*Actual samples may vary slightly in color to that shown in the images above.



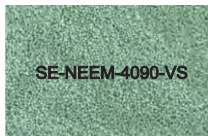
SE-MX-4142-S



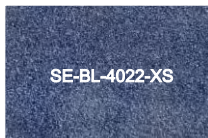
SE-GO-4301-VS



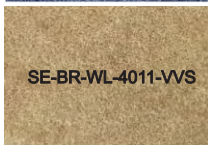
SE-RE-4043-XL



SE-NEEM-4090-VS



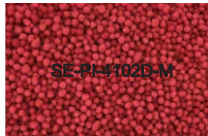
SE-BL-4022-XS



SE-BR-WL-4011-VVS



SE-BK-4031-VS



SE-PI-4102D-M

# SOFT SPHERES - SA

**INGREDIENTS: Agar, Actives, Preservative, Color**

- ❖ Visual carrier systems for home and personal care water-based formulas.
- ❖ Based on a unique manufacturing process that creates spherical beads.
- ❖ Creates visual effects in your soaps, emulsions, gels, lotions and creams.
- ❖ Insoluble in water and oils.
- ❖ Beads are soft and break upon applying pressure.
- ❖ Disappear on gentle rubbing without leaving any residue on skin or hair upon application.

As an innovative leader in high quality beads, we offer an impressive range of customization possibilities such as: loading pigments and encapsulating our carriers with hydrophilic functional ingredients. This includes actives, fragrances, vitamins, oils etc. We can also modify the size as per your requirements.

**SA-GO-7749-L**

*\*Actual samples may vary slightly in color to that shown in the images above.*

**SA-RE-5506D-S**

**SA-PI-5500-VS**

**SA-GR-5502L-VS**

**SA-GO-5504-VS**

**SA-BL-VE-5041-S**

**SA-OR-5503-VS**

**SA-GR-5505D-L**

**SA-WH-VE-5001-VS**

# OIL SPHERES - SO

**INGREDIENTS: Agar, Carrageenan, Glycerin, Preservative, Color**

- ❖ Fine encapsulates delivering active ingredients, fragrance and/or oils for home and personal care products.
- ❖ Based on a unique manufacturing process that creates spherical beads with encapsulated fragrance, oil or active in the core.
- ❖ Can be used in both oil and water based soaps, emulsions, gels, lotions and creams.
- ❖ Beads have a soft outer shell that breaks upon applying pressure and releases the core ingredient.
- ❖ Insoluble in water and oils.
- ❖ The outer shell ensures that the encapsulated active remains pure until application.

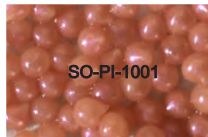
As an innovative leader in high quality beads, we offer an impressive range of customization possibilities such as: loading pigments and encapsulating our carriers with both hydrophobic and hydrophilic functional ingredients. This includes actives, fragrances, vitamins, oils etc. We can also modify the size and color as per your requirements.

**SO-CL-1010**

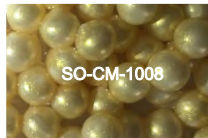
\*Actual samples may vary slightly in color to that shown in the images above.



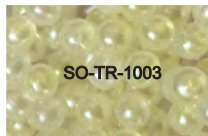
**SO-BL-1004**



**SO-PI-1001**



**SO-CM-1008**



**SO-TR-1003**



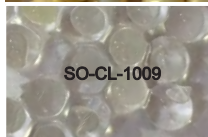
**SO-PI-1005L**



**SO-OR-1006**



**SO-GO-1007**



**SO-CL-1009**

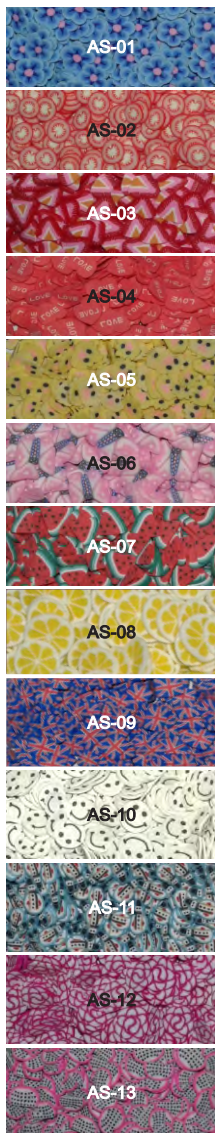


# ACTISHAPES™ - AS

**INGREDIENTS:** Polyvinyl Chlorine Resin, Barium Stearate, DOP, Limestone Powder, Carbon Powder, Color

- ❖ Visual carrier systems for use in cosmetic and personal care industry.
- ❖ Creates visually attractive effects in soaps, gels, stick on nail decoration and various other cosmetic - home and personal care formulations.
- ❖ Available in various shapes.
- ❖ Insoluble in water and oils.
- ❖ Remains intact in added formulation.
- ❖ Have a long shelf life without any added preservatives.

As an innovative leader in high quality visual carriers, we offer an impressive range of possibilities for ultimate customer experience. More colors and customization of designs, shapes and sizes are possible on customers' request.



# ACTIFILMS™ - AF

**INGREDIENTS: HPMC, Sodium CMC, Plasticizer, Color**

- ❖ Visual carrier systems for home and personal care oil-based formulas in different shapes and sizes.
- ❖ Technology is based on a unique manufacturing process that forms thin films.
- ❖ Creates visual effects in your tooth paste, bath bombs and oils.
- ❖ Soluble in water, insoluble in oils.
- ❖ Films are hard when dry but soften in contact with water.
- ❖ Disappear on gentle rubbing without leaving any residue on skin or hair upon application.
- ❖ Have a long shelf life without any added preservatives.

As an innovative leader in high quality visual carriers, we offer an impressive range of customization possibilities such as: loading pigments and adding both hydrophobic and hydrophilic functional ingredients. This includes actives, fragrances, vitamins, oils etc. We can also modify the size and shape as per your requirements.

**AF-HE-RE-4021**

*\*Actual samples may vary slightly in color to that shown in the images above.*

**AF-FI-BL-4057**

**AF-SM-WH-4048**

**AF-ST-MX-4072**

**AF-CR-GR-4068**

**AF-CTR-PI-4121**

**AF-TR-SI-4035**

**AF-CN-RE-4221**

**AF-MM-GO-4013**

**AF-PM-PI-4016**

**AF-SQ-WH-4501**

**AF-RO-GO-4004**

**AF-BE-GO-4105**

**AF-M-HE-BL-4055**

# LUSTRE DUST - LD

- ❖ Visual carrier systems for home and personal care formulations with a powder, oil and water base.
- ❖ Technology is based on a unique manufacturing process that forms dust in various colors.
- ❖ Creates visual and shining effects in your nail enamels, foundation, sunscreens, emulsions, soaps, gels, lotions and creams.
- ❖ Available in various different types (below).
- ❖ Insoluble in water and oils.
- ❖ Remains intact in added formulation.
- ❖ Have a long shelf life without any added preservatives.

As an innovative leader in high quality visual carriers, we offer an impressive range of customization possibilities for ultimate customer experience. More colors and customization of actives is possible on customers' request.

**Alchemique pigments:** This rich collection of colors provides deep, true colors that are independent of the underlying skin tones, normally acquired from the transparent varieties of typical color effect pigments. Thus, making our Alchemique pigments truly transformational!

**Argentique Pigments:** These pigments take pure synthetic mica flakes and apply a vapor deposition coating of pure silver over them. The result is an elegantly brilliant and mirror-like reflective surface that dramatically catches and reflects any surrounding colors providing an infinitely unique effect to a wide variety of color cosmetics.

**Biluna pigments:** Biluna pigments' soft optical effects help to gently diffuse surrounding ambient light and also minimize the appearance of fine lines and wrinkles.

**Chromatique Pigments:** These pigments provide an intense and dramatic pearlescent effect to a variety of colors that can be used in many types of cosmetic and personal care products.

**Diamond Pigments:** These pigments are capable of delivering exceptionally dramatic optical effects, including significant depth, sparkle and very intense spectral colors.

Alchemique Shimmer  
Emerald- UA- 007

Alchemique  
Gold- UA-003

Argentique Satin  
Silver- UAG-003

Biluna Silk- UB-004

Chromatique Milori  
Blue- UC-011

Chromatique Carmine  
Red- UC-007

Chromatique Starlight  
Kronbergs Green- UC-006

Chromatique  
Silver Gray- UC- 014

Chromatique Starlight  
Chocolate- UC- 004

Chromatique Starlight  
Chestnut Brown- UC-003

Diamond Yellowish  
Green- UD-036

Diamond Star  
Blue- UD-018

Diamond  
Sky Blue- UD-033

## LD-NPI-8101

\*Actual samples may vary slightly in color to that shown in the images above.



# LUSTRE DUST - LD

**Fiesta Pigments:** They are an innovative line of synthetic mica-based pigments that deliver energetic iridescent colors and effects, excellent value, and advanced functionality without the risk of heavy metal.

**Gold Pigments:** These pigments are composed of synthetic mica coated with titanium dioxide and iron oxide. Wide arrays of gold shades are obtained by differing particle sizes and the ratio of iron oxide to titanium dioxide.

**Kaleidoscope Pigments:** This range of pigments separate light into multiple components and produce up to four dramatic and distinct interference colors: three by reflection and one by transmission, which then appear as iridescent luminosity with exceptional eye catching appeal.

**Metallic Pigments:** They add metallic depth and highlights to eye shadow, eyeliners, lipsticks, nail enamels, shampoos, soaps and many other personal care formulations. Metallic Pigments are perfect for sun care products.

**Optique Pigments:** These visually striking pigments show a pronounced color flop referred to as the flip-flop effect, meaning that the colors of the pigments change depending on the viewing angle.

**White Pearl Pigments:** Our Whites and Silver Pigments provide a soft white to silver color. Umang's Silver White Pigments vary in luster from silky and smooth, to fine sparkle, depending upon particle size and distribution. They are made by coating Titanium Oxide on a synthetic mica substrate.

LD-GO-8162

\*Actual samples may vary slightly in color to that shown in the images above.

Fiesta Yellow  
Silk- US-040

Fiesta  
Red Silk- US- 039

Eldorado Sparkly  
Deep Gold- UE-013

Eldorado Aztec  
Gold- UE- 005

Kaleidoscope  
VBG- UK-008

Kaleidoscope  
BGG- UK- 009

Eldorado Ruby  
Red- UM-007

Eldorado Sparkly  
Deep Gold- UE-013

Eldorado Royal  
Gold- UE- 009

Eldorado Reddish  
Gold- UE- 001

Optique Sparkle  
Orange- UO-026

Optique Satin  
Violet- UO-005

White Starlight  
Pearl - UW-007

Umang was founded in 1982 with an objective to serve clients with all kinds of equipments and accessories under one roof. Within a very short span of time, we succeeded to be the most reliable brand name in the market supplying equipments and products to the Pharmaceutical Industry for Pelletization and Oral Thin Strip solutions.

In 2007, the company ventured into solutions for Personal Care Industry, mainly focusing on Oral Care products and Encapsulated ingredients for cooling applications. In 2009, the company further integrated itself to provide applications for Bakery and Food products like Chewing Gums, Mouth Dissolving Films etc. Today the company has three major divisions : Personal Care, Bakery and Food Ingredients and Nutraceuticals for innovative dosage form development. Unique products and technology is the strength of our brand providing a single source of encapsulation solutions for all our customer needs.

## Pelletization and Thin Film Processing



Complete engineering equipment solutions like Pelletization: Extrusion, Spheronization, Layering, Granulation, Fluid Bed Coating, Drying, Edible Film Line and Packaging.

### Websites:

[www.umangpharmatech.com](http://www.umangpharmatech.com)  
[www.umangengineering.com](http://www.umangengineering.com)  
[www.extruderspheronizer.com](http://www.extruderspheronizer.com)

## Laboratory Concept Range



Laboratory range of equipment solutions like Pan Coating, Sphericity Checking, Laboratory Edible Film Line, High Shear Mixers / Homogenizers, Extrusion and Spheronization, etc.

### Websites:

[www.concept-machines.com](http://www.concept-machines.com)  
[www.coating-machines.com](http://www.coating-machines.com)  
[www.umangengineering.com](http://www.umangengineering.com)

## Personal Care and Home Care Division

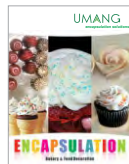


Encapsulation of oils, fragrances, flavors, actives, extracts, vitamins, etc. Visual effects for all kinds of Home and Personal Care products with customization as per customer needs.

### Websites:

[www.umangpharma.com](http://www.umangpharma.com)  
[www.cosmeticbeads.com](http://www.cosmeticbeads.com)  
[www.natural-exfoliator.com](http://www.natural-exfoliator.com)

## Bakery and Food Decoration



Bakery Decoration products like Lustre / Disco / Edible Dust, Edible Glitter, Sparkling Jimmies / Pearls / Sugars, etc. for all kinds of Baking / Ice Cream decoration needs in bulk / retail packs.

### Websites:

[www.cake-sprinkles.com](http://www.cake-sprinkles.com)  
[www.edibleglitters.com](http://www.edibleglitters.com)  
[www.edibleglitterdust.com](http://www.edibleglitterdust.com)

## Pharmaceutical and Nutraceutical



Encapsulation solutions for Pharma Industry: Technology like SR, IR, Pulsed and Edible Films. Neutral Pellets: Sugar, MCC, Tartaric Acid, Lactose, Mannitol, Starch, Calcium Carbonate, etc.

### Websites:

[www.umangpharmaceuticals.com](http://www.umangpharmaceuticals.com)  
[www.pharmaceuticalpellets.com](http://www.pharmaceuticalpellets.com)  
[www.neutralspheres.com](http://www.neutralspheres.com)

## Umang Capabilities



Encapsulation solutions for Pelletization and Thin Film Processing, Concept Range, Personal Care and Home Care products, Pharmaceuticals and Nutraceuticals, Research and Development on Films, Patches and Pellets.

### Websites:

[www.mouthdissolvingfilm.com](http://www.mouthdissolvingfilm.com)  
[www.micro-pellets.com](http://www.micro-pellets.com)

## A truly global organization...



© 2016. All rights reserved.

**UMANG**  
 encapsulation solutions

## Umang Pharmatech Pvt. Ltd.

Survey No. 146, H. No.1 (PT),  
 Vasai Phata Highway Junction, Pelhar,  
 Nh8, Vasai (E) - 401 208, Maharashtra (India).

Tel. : (+91-250) 652 1601 - 08

Mob. : (+91) 986 723 6594

E-mail : [sales@umangpharmatech.com](mailto:sales@umangpharmatech.com)

Website: [www.umangpharma.com](http://www.umangpharma.com) / [www.cosmeticbeads.com](http://www.cosmeticbeads.com)